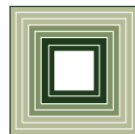


NC Community College System:

Metrics



Presentation to Joint Appropriations Subcommittee on Education
Andrea Poole, Fiscal Research Division
February 28, 2013

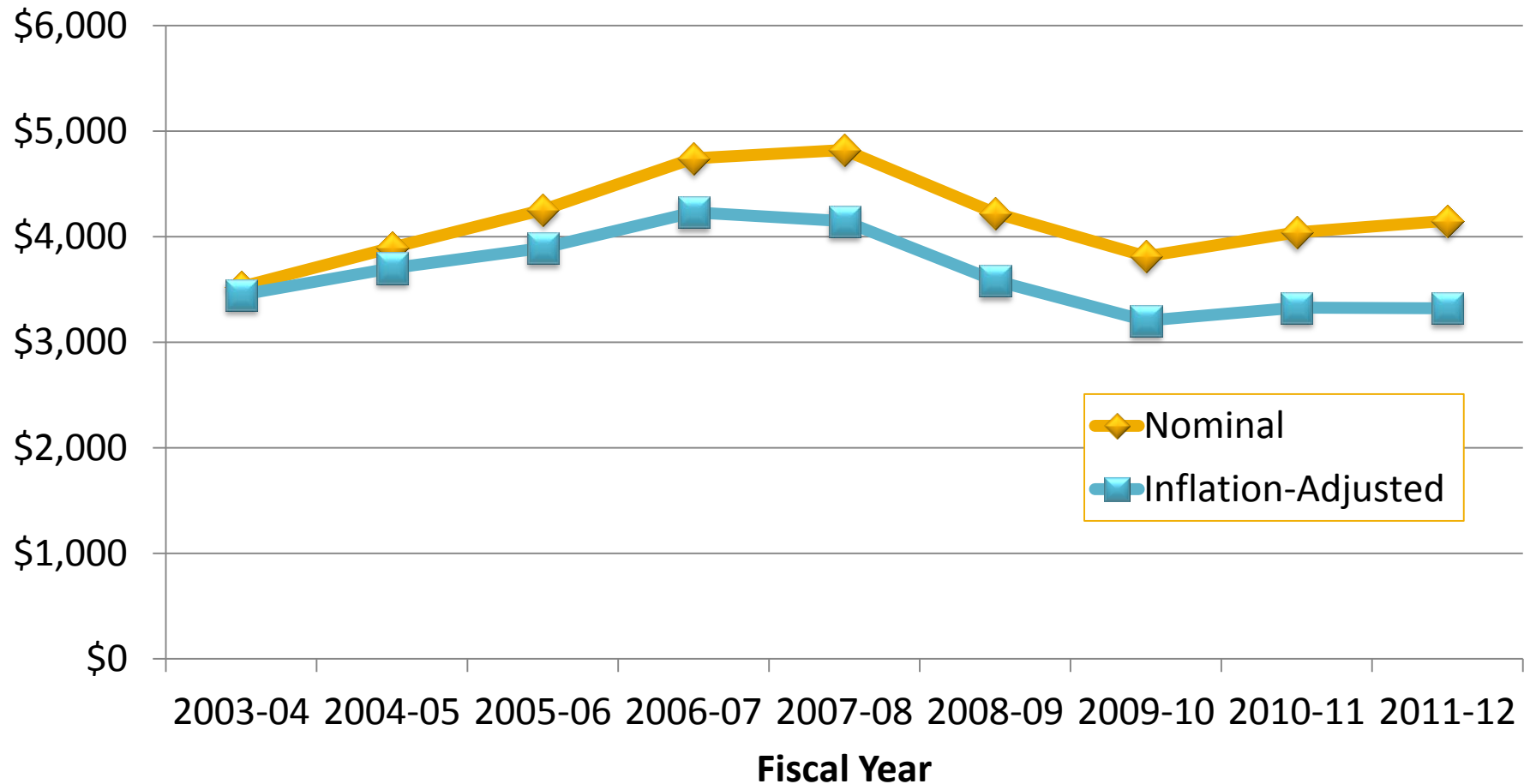


FISCAL RESEARCH DIVISION
A Staff Agency of the North Carolina General Assembly

Agenda

1. Appropriations per FTE
2. Critical Success Factors
3. SREB and National Comparisons

Appropriations per FTE: FY 2004-12



Source: Year-end BD-701 reports, Budget Code 16800 (Final net State General Fund Appropriations); NC Community College System Annual Statistical Reports (Budget FTE and non-budget FTE supported by appropriations, does not include self-supported FTE).

Critical Success Factors

- The Critical Success Factors Report is the North Carolina Community College System's major accountability document .
- History of performance measurement in NCCCS:
 - 1993 – SBCC began monitoring performance data on specific measures.
 - 1999 – Established 12 performance measures for accountability.
 - 2007 – Reduced to 8 measures.
 - 2012 – 8 performance revised.

Critical Success Factors: Measures

Measures Until July 2012	New Measures (S.L. 2012-142, Sec. 8.5)
Progress of Basic Skills Students*	Progress of Basic Skills Students
	Passing Rate for GED Diploma Examinations
Performance of College Transfer Students	Performance of College Transfer Students
Passing Rates of Students in Developmental Courses	
Success Rates of Developmental Students in Subsequent College-Level Courses	Success rates of Developmental Students in Subsequent College-level English
	Success rates of Developmental Students in Subsequent College-level Math
	Progress of First-Year Curriculum Students
Curriculum Student Retention and Graduation	Curriculum Student Retention and Graduation
Passing Rate for Licensure and Certification Exams	Passing Rate for Licensure and Certification Exams
Satisfaction of Program Completers and Non-Completers	
Client Satisfaction with Customized Training	

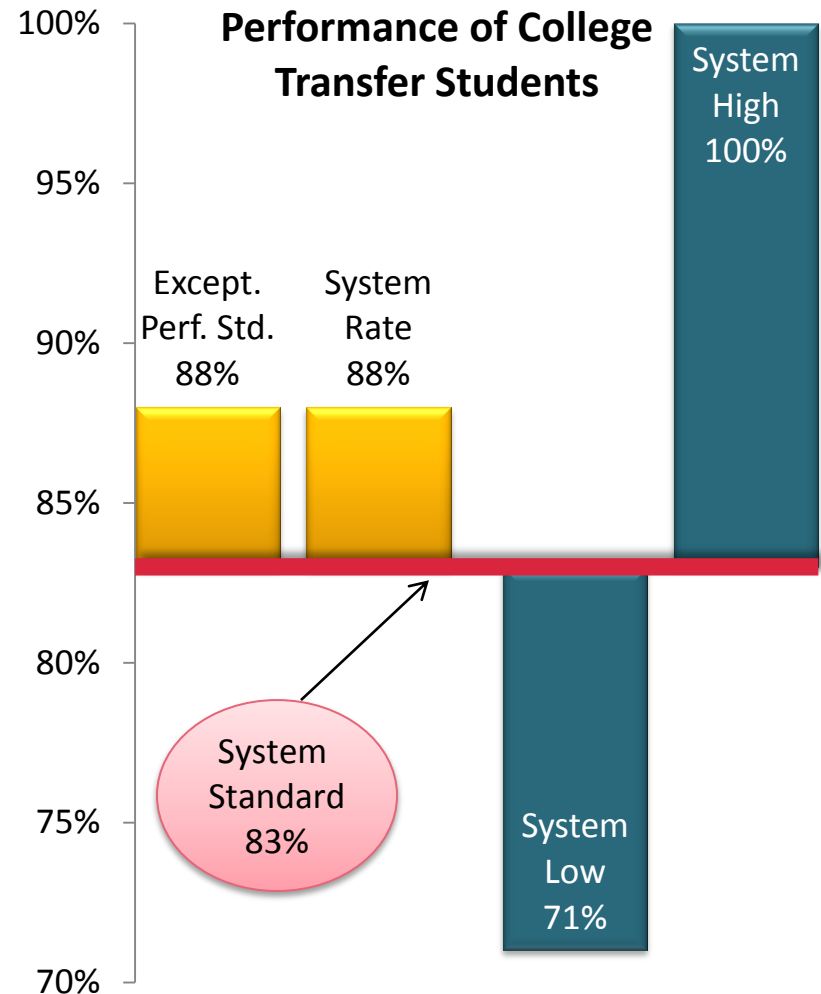
*Not measured in 2012 per S.L. 2012-142, Sec. 8.6.

Critical Success Factors: Standards

- To receive “Recognition of Exceptional Institutional Performance” a college must:
 - Meet or exceed all performance measures,
 - Have no licensure exams with a passing rate of less than 70%, and
 - Have their college transfer students perform at a level equal to or above other UNC system students.
- For 2012:
 - 27 of 58 colleges met all performance standards
 - 16 colleges received Recognition of Exceptional Institutional Performance.

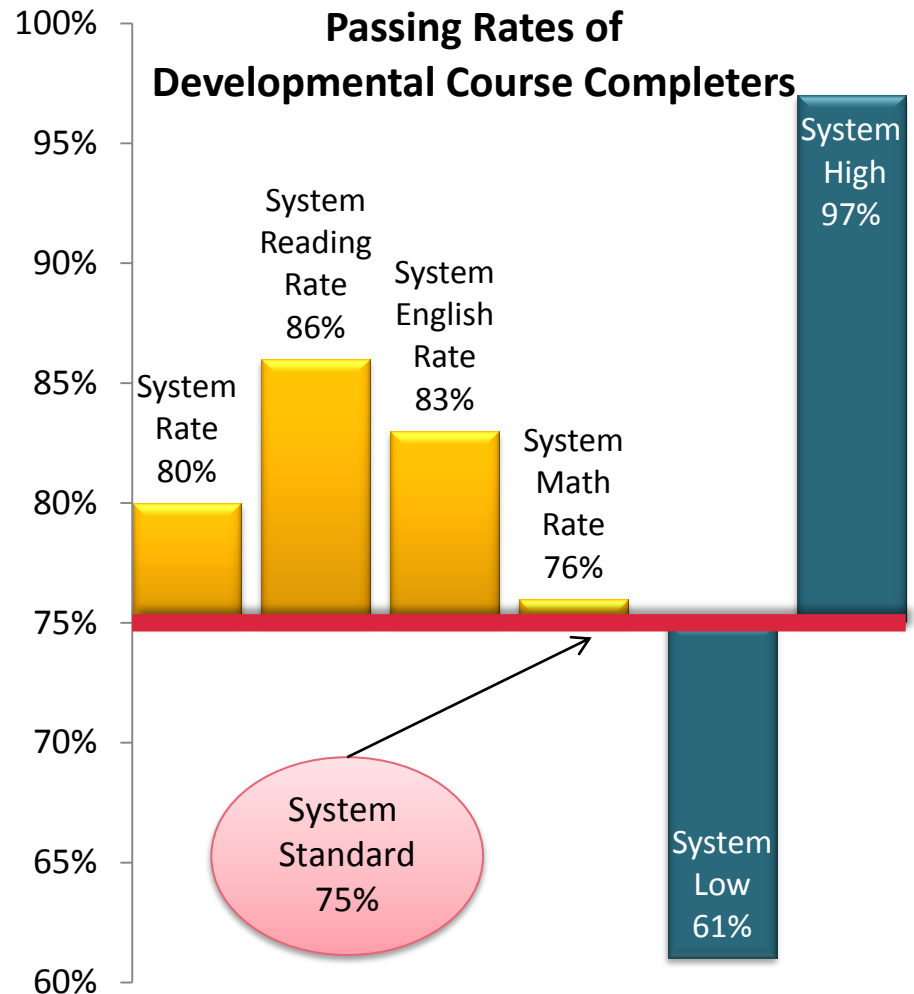
Critical Success Factors: Performance of College Transfer Students

- % of students transferring to a university with a GPA equal to or greater than 2.00 after two semesters at the university.
- 43 colleges met 83% standard.
- 28 colleges met 88% exceptional standard.



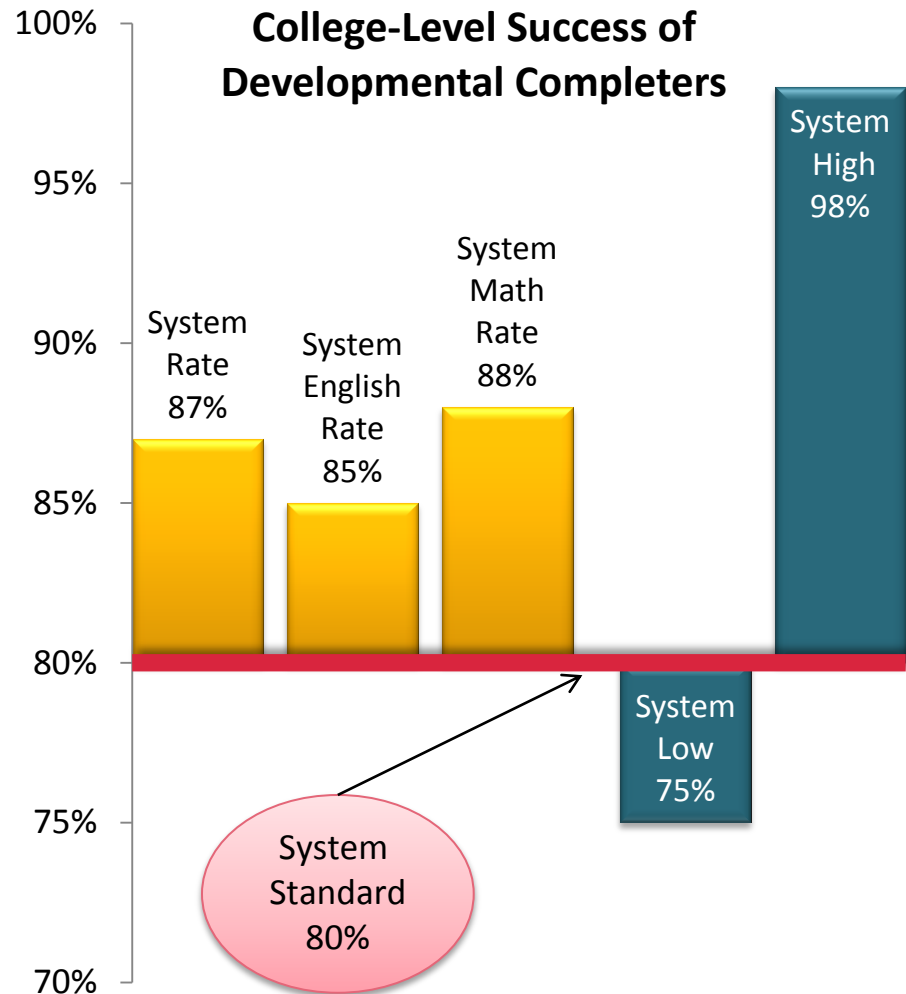
Critical Success Factors: Passing Rates of Students in Developmental Courses

- % of developmental course completers in English, reading, or math with a grade of C or better.
- 48 colleges met 75% standard.



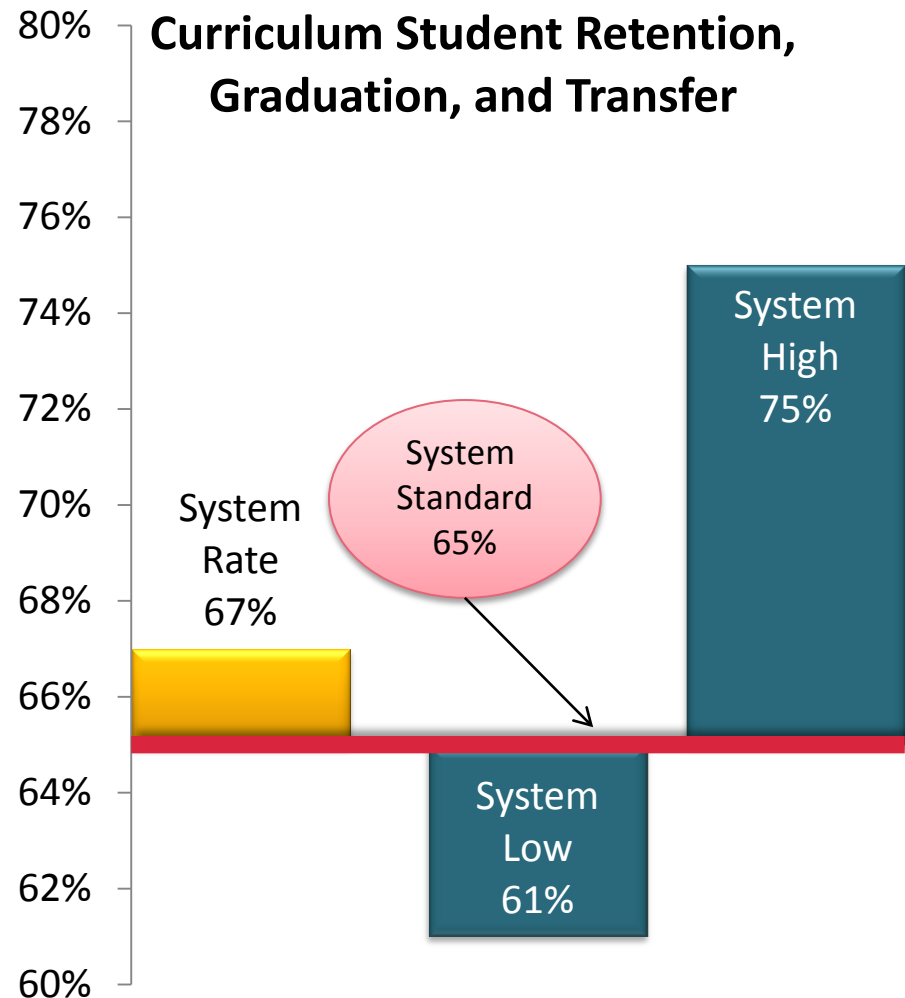
Critical Success Factors: Developmental Students in Subsequent College-Level Courses

- % of college level English or math course completers with previous developmental coursework who complete the college level English or math with a grade of D or better.
- 53 colleges met 80% standard.



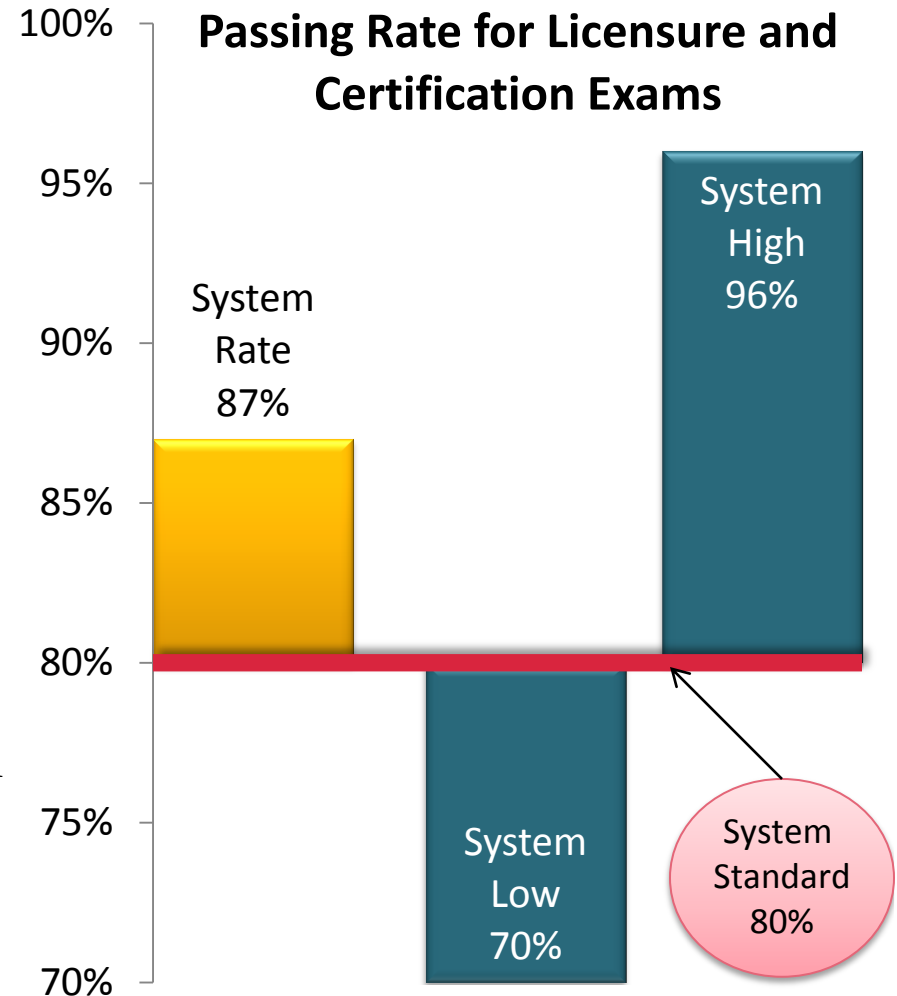
Critical Success Factors: Curriculum Student Retention, Graduation, and Transfer

- % of fall credential-seeking students who have graduated or are still enrolled at the same college, another community college, or a university one year later.
- 48 colleges met 65% standard.



Critical Success Factors: Passing Rate for Licensure and Certification Exams

- % of first-time test takers passing an exam required for NC licensure or certification prior to practicing the profession.
- 47 colleges met 70% standard.
- 36 colleges met Exceptional Standard, with no exam passing rate less than 70%.



Critical Success Factors: Satisfaction Rates

Program Completers and Non-Completers

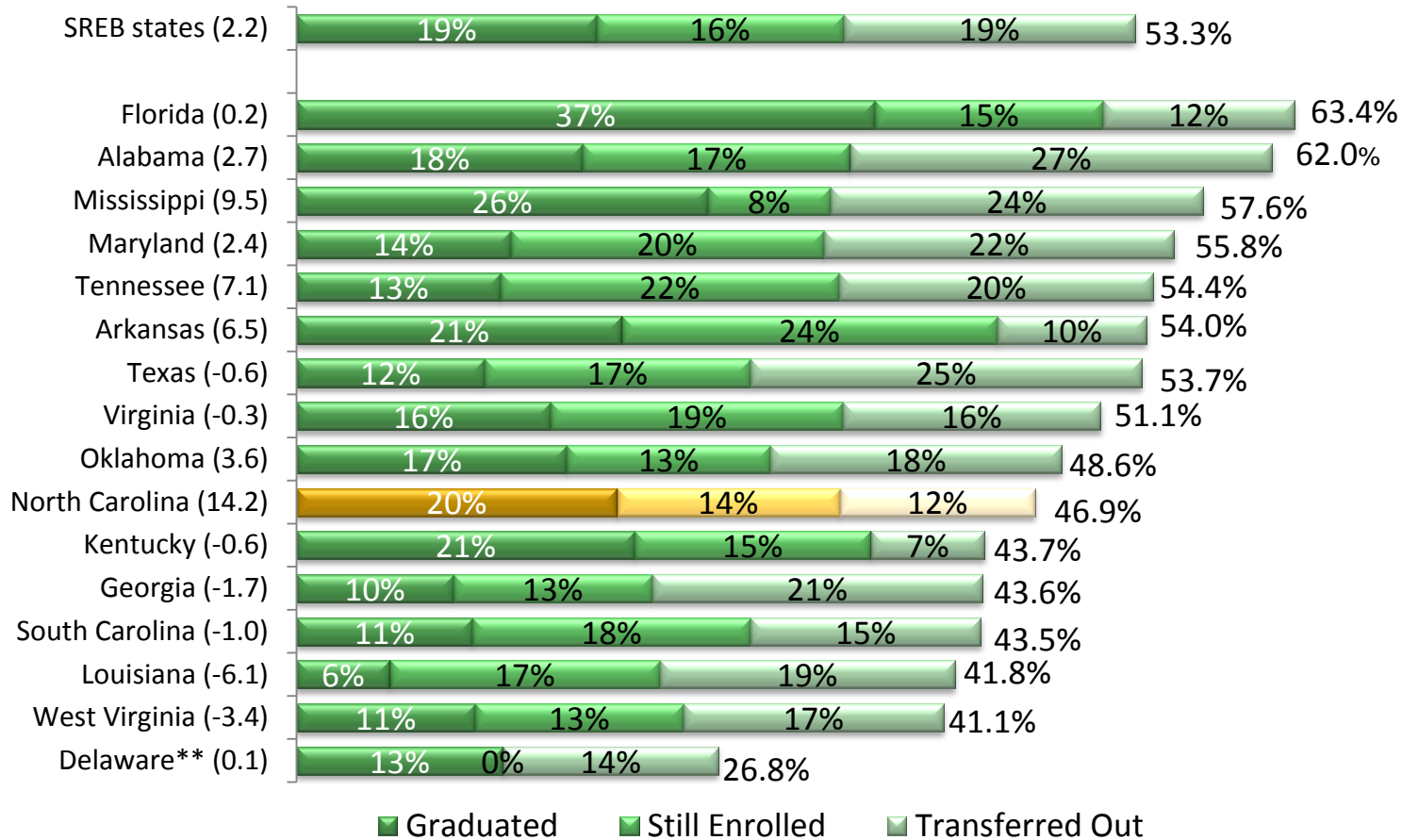
- Standard = 90% of exiting students will be “satisfied” or “very satisfied” with overall quality of the college.
- System rate = 96%; all 58 colleges met standard.

Customized Training

- Standard = 90% of clients receiving customized training programs and services through Customized Training and Small Business Centers will be satisfied with the training.
- System rate = 95%; all 58 colleges met standard.

SREB Comparison

Three-Year Graduation and Progression Rates* of
Full-Time Students, 2008 Cohort
(point change from 2007 cohort shown in parentheses)



Note: Totals may not equal sum of entries due to rounding.

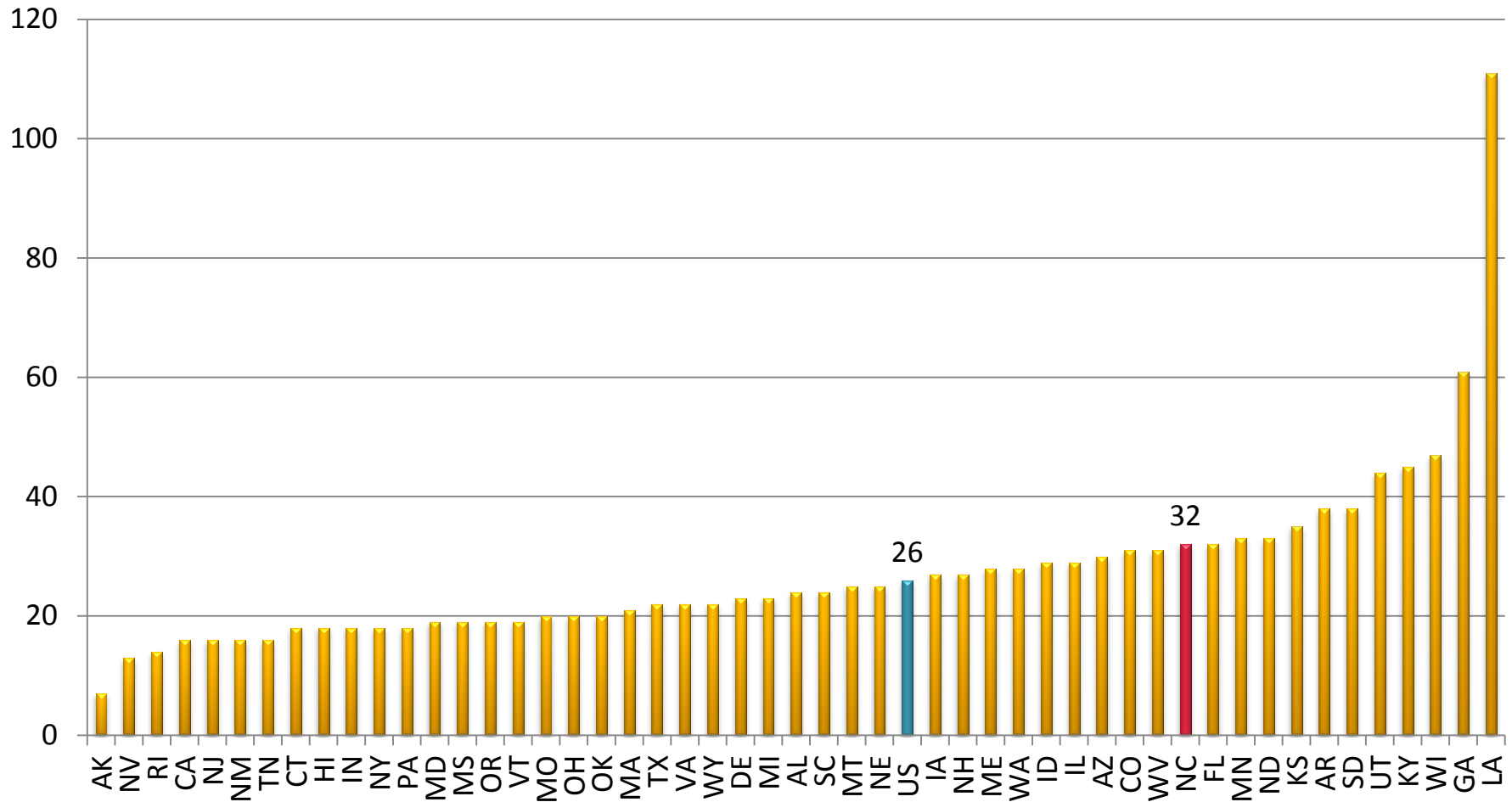
Source: SREB –State Data Exchange, 2011-2012 Indicators Report.

* "Progression" refers to students who graduated, remained enrolled, or transferred out within 150 % of normal time.

** Does not report students still enrolled.

National Comparison: Completions

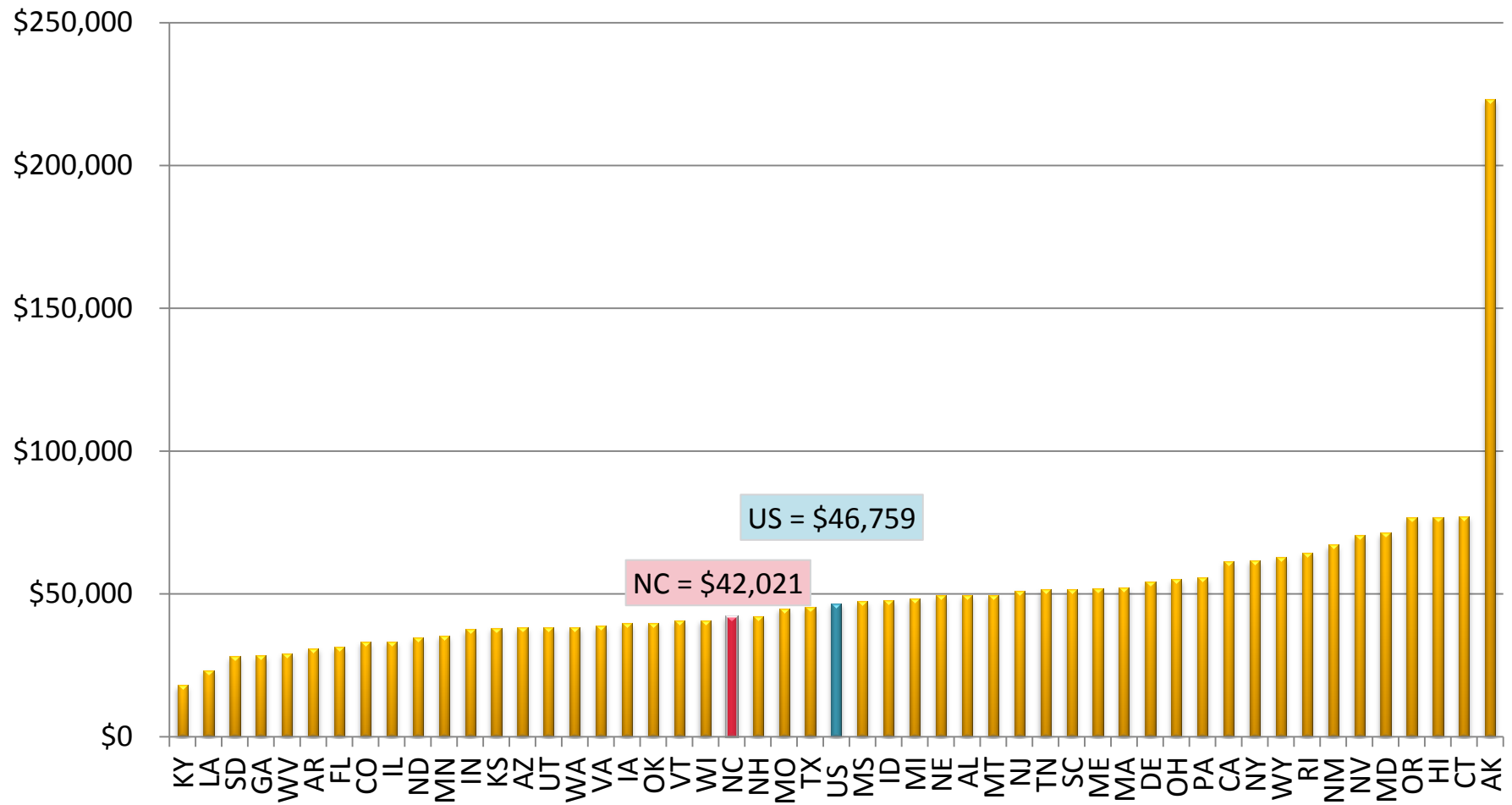
Completions per 100 FTE Students, FY 2009-10



Source: Delta Cost Project IPEDS Database

National Comparison: Spending per Completion

Education and Related Spending/ Completion, FY 2009-10



Source: Delta Cost Project IPEDS Database

Summary

Community College performance measurements are under revision.

Most colleges meet or exceed State performance standards.

Compared to SREB states, NC has a lower persistence rate but shows the most improvement.

Nationally, NC has a higher rate of completions per 100 FTE and a lower cost per completion than the national average .